

WELCOME

Fox Cottage



at Blakelow Farm, Winster

a little hello from us



If you need us...

Andy 07539 109005

Gina 07813 333519

Hello you!

Firstly, Thank you for choosing to stay at Fox Cottage. We hope you have a lovely stay, creating lots of memories.

We purchased Blakelow Farm in July 2022 after dipping our toes into the holiday let business back in 2020. We fell in love with creating something special for our guests and decided to take the plunge and move our family to Winstar, all the way from Saddleworth, to follow our dreams.

We believe the most important thing in life is creating memories, so we hope Blakelow Farm makes a home in your memories for years to come.

If there is anything you need during your stay, have a little question or want help with your plans, just ask!

With love,

Andy, Gina, Jenson & Imogen.

Blakelow Farm

the basics

getting in

Parking is available next to Fox Cottage. Additional parking can be made available. Just ask.

If you would like to use our electric car charger, this is available next to the utility barn.

Keys will be in the locks for each door. Be careful not to lose these please.



going home

Check Out is by 10:00am.
Simply leave the key in the door as you leave.

Leave towels etc in the showers.

Do not forget to check you have taken all your belongings.

Please could you kindly close all windows and turn off lights.





using fox cottage

NO SMOKING

Please do not smoke inside the cottage. If you smoke outside, please extinguish cigarettes carefully.

NOISE

Life is for living, enjoy music and laughter. Please just be respectful to other guests, especially late evenings.

BREAKING THINGS

Accidents happen. Just let us know if something broke so we can fix it or replace it.

SECURITY

Please remember to close the windows and lock the doors when you go out and about.

HEATING

We have eco-friendly energy and our heating and hot water is generated by ground source heating. If you are cold, turn the heating up. If you are hot, turn the heating down before opening windows. Feel free to make the temperature to your liking. You are on holiday!

WIFI

Network Name: Blakelow Farm
Password: blakelow814

WASHING

If you want to wash and dry your clothes whilst you stay at Blakelow, we have a dedicated utility barn which you are welcome to use. There is a washing machine, dryer and extra freezer space. It is yours to use as you wish during your stay.

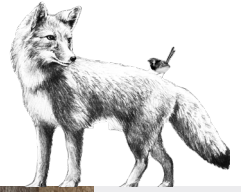
ANIMALS

We have Milo the dog, Pippa & Nuna the cats & a flock of hens. They are all friendly! Milo may bark if he does not recognise you at first, but is very soft. If you have brought a dog, please do not let them chase our chickens or cats.

BINS

There are two external bins next to the wood store at the side of Fox Cottage. One is for general waste and the other for recyclable waste. There is also a foody caddy under the sink.

how does it work?



Heating

You will find a thermostat in the living room. Simply set the desired temperature and the system will do the rest.

Television

The smart TV will be logged into our complimentary Netflix, Prime and Disney+ accounts. Feel free to log into your own accounts if you would like to.

Lights

There are various light switches on the walls. You may accidentally start your own disco trying to figure them all out. That is fine, we still do that! There are under cupboard lights in the kitchen which have their own switches.

Appliances

We believe our appliances will work very much like your own at home, but if for any reason you need a bit of advice, just call/text and we will pop round.

The Fire

The stove will be very hot when in use, please use the cloth provided when opening the door. Open the top and bottom air vents before loading the stove. Put a couple of small logs on the base and a small stack of kindling on top. Place a firelighter in the middle and carefully and safely light. We recommend keeping the fire small until it is fully going. Be extremely careful with children around.



things to do at blakelow

Picnic with a view

Take a walk up to the top of Blakelow field. There is a bench and a mowed spot for a picnic. Quite a stunning view over the Peak District National Park.

Visit our allotment

If you are into fresh herbs & veg, you are more than welcome to take a wander around our allotment and pick some rosemary, mint etc for your cooking. Just let us know if you want to visit and we will show you the way.

Read & Play

Our utility barn has a cupboard stocked with many books & games. Feel free to take these back to your cottage to read. If you start a book and do not have time to finish, feel free to take it with you and post it back when you are done.

Nice Weather

We have sunloungers, a charcoal bbq, sun umbrellas & small marquees available on request. We have these stored away when it rains, so just ask text/call and we will drop them around at your cottage anytime.

Bike Store

Winster and local villages are idyllic for cyclists. If you have brought your bike, we will give you a key to our bike store to use at your leisure during your stay.

Ordering in

You are on holiday! If you want to order a takeaway or have a supermarket delivery, go for it! Use our address and we will direct them to your door if they knock on ours. We may accidentally steal a poppadom.



places to go

Supermarkets

Sainsburys, Matlock

Aldi, Bakewell

M&S Food, Matlock

Petrol Stations

Sainsburys, Matlock (2.4mi)

Esso, Matlock (3.0mi)

Texaco, Two Dales (2.4mi)

Things to do

Chatsworth House

Haddon Hall

Heights of Abraham

Matlock Farm Park

Monsal Trail

Mam Tor

Dovedale Stepping Stones

Crich Tramway Village

Hopton Hall Gardens

The Winster Walk

Castleton Caves

& so many more

Villages to visit

Bakewell

Hartington

Castleton

Edale

Tissington

Farm Shops

Chatsworth Estate Shop

Hartington Farm Shop

Denby Pottery Village

Croots Farm Shop

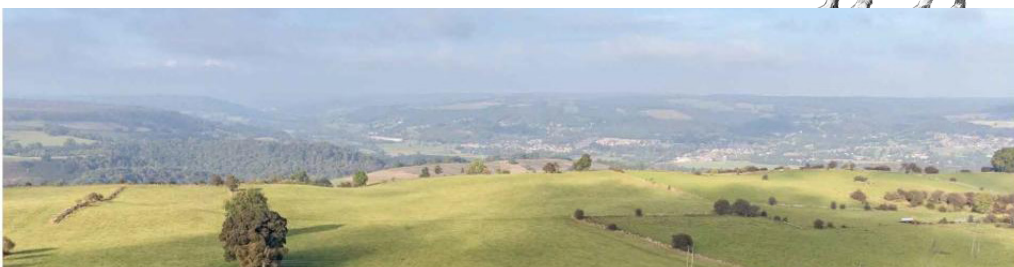
If possible

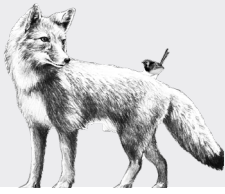
Stars on a clear night

Sledging down the hill

Matlock Peddleboats

Take in a local festival





local eateries

Bank Top Cafe, Winstler
(breakfast, 20 min walk)

The Old Bowling Green, Winstler
(picturesque, 30 min walk)

The Miner's Standard, Winstler
(great for drinks, 20 min walk)

Barley Mow, Bonsall
(classic pub grub, 40 min walk)

The Woodyard, Bakewell
(on the river, 15 min drive)

Devonshire Arms, Hartington
(picturesque location, 10 min drive)

Devonshire Arms, Beeley
(highly reviewed, 15 min drive)

Farmyarn Inn, Youlgrave
(village gastro pub, 10 min drive)

Chatsworth Farm Shop, Chatsworth
(beautiful location, 20 min drive)

Chatsworth Kitchen, Peak Village
(local shops, 15 min drive)

Prince of Wales, Baslow
(many awards, 20 min drive)

Druid Inn, Birchover
(great walks, 5 min drive)

The Cock Inn, Mugginton
(authentic, 30 min drive)

Garden Room, Callow Hall
(special occasion, 30 min drive)

Anila, Ambergate
(best indian, 20 min drive)

This list has been created by previous guests & our own personal favourites & by no means scratches the surface of the many wonderful places to eat locally.

We are slowly making away around the local restaurants & cafes. If you visit one which you think other guests would love, please let us know so we can add it to the list.

Please note that restaurants get booked up very quickly, especially over the weekends. We advise booking to avoid any disappointment.

Most places are dog friendly, one of the benefits of The Peak District.



what's new?

We hope you have a lovely stay and wish to come back soon. Here are a few things we have planned over the coming months.

Wren-ovation

Work on Wren Cottage (the cottage next to Fox Cottage) will be starting later this year. We'll be making this a couple's countryside retreat with everything you'll need for a romantic getaway. This will be able to be booked alongside Fox Cottage, so we'll have space for up to 6 guests over the two cottages.

Out with the old stables

We're currently demolishing the stable blocks and replacing with a 2 bed stone barn. Don't worry about noise, we've put plenty of measures in place to not impact your stay!

The Wilding

To the other side of the farm, we are building a luxury lodge which will be known as 'The Wilding'. This single bedroom, compact hideaway, will have its own paddock garden, views over Chatsworth house & a moon roof to get the most out of the stunning star-lit skies.

Bookings open August 2024.

Suggestions

We love what we do, but a fresh pair of eyes is priceless! If there is something we are missing or you would like to see. Let us know, we would love to hear your thoughts.



dogs

Derbyshire Dales & The Peak District is made for dogs, so if you have brought your little furry friend, that's great! We simply ask that you follow some guidelines at Blakelow.

PLEASE KEEP YOUR DOG ON A LEAD AT ALL TIMES WHEN IN THE GROUNDS OF BLAKELOW. EXCEPT FOR THE DESIGNATED FIELD SHOWN ON THE MAP BELOW.

Mucky Pups

Please don't let muddy dogs sit on the furniture or go upstairs. You're welcome to clean them down in the ground floor shower if needed first.

Excited Pups

We know having space to run around is exciting. You are welcome to use the field behind Fox Cottage to let your dog off the lead to burn off some steam. Please be aware that there are chickens and cats who live on the farm. They might not appreciate being chased.

Poopy Pups

The joy of any dog owner's life. We've provided poo bags for you to collect any 'little presents' your dog leaves around. We don't fancy mowing over these!

Nervous Pups

If your doggy is easily spooked or maybe gets a little aggressive, please let us know.

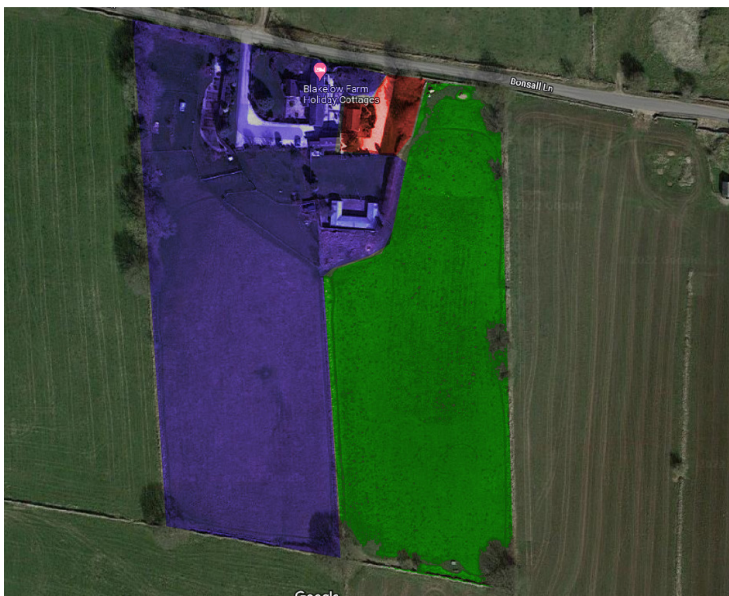
We have our own Working Cocker Spaniel and children at Blakelow, so we can make sure everyone is safe and sound.

Lonely Pups

Please don't leave your dog in the cottage alone whilst you go out. It's a new place, with new smells and sounds and we simply can't tend to your dog whilst you are not around.

Naughty Pups

In the unlikely event that your dog decides to damage something in or around the cottage, please be aware that we may need to charge for repair, replacement or cleaning fee.



Dog Field - Dog can be off the lead



Fox Cottage & Grounds - Dog must remain on the lead



Our Home - No access here please

emergency policy

fire prevention

We try, and ask that you will also take all reasonable precautions to avoid the risk of fire, particularly when using candles, matches, the log burner, or when cooking. However, accidents can arise, so please note:

There is a multi purpose Fire Extinguisher, and a Fire Blanket, in the kitchen. Please make sure you have made yourselves familiar with their location and how to use them.

There are smoke alarms fitted, we check these regularly.

There is a torch hanging on the key rack, and another at the top of the stairs. We check the batteries, but please do check them too.

If using the charcoal BBQ, please read the instructions available prior to lighting. Please make sure that there is adequate space around the BBQ to avoid any fires. Children MUST be supervised AT ALL TIMES when BBQ's are in use. Tell children about the high surface temperatures and keep them away from the BBQ so they avoid getting burned or igniting their clothes. Do not place clothing or other flammable material on or near the BBQ. Keep combustible materials away from the BBQ to avoid the possibility of igniting such materials.
(E.g. clothing, furniture, newspapers, books)

A copy of our fire risk assessment is available upon request.

emergency event

If there is a fire, the most important thing is your safety and that of the other people in the building.

If you cannot instantly and successfully deal with the fire yourself, make sure there is no one in the room and close the door, ensure that all other occupants with you are alerted and you leave the cottage by the quickest route. Please do not stop to gather belongings or bags.

If you suspect that there is a fire in a room and the door is closed - Do not open it to look. Please leave the building immediately and raise the alarm: Never re-enter a burning building.

Ring 999
Alert people in other cottages
Alert us
Then wait on the driveway.

tips to stay safe

Never leave candles burning unattended.

Do not light candles upstairs.

Always be aware of hazards if using candles on window sills or tables etc. Especially in front of curtains and next to flowers.

The log burning stove is designed to work with the doors shut. Please do not leave them open, especially if leaving the room.

Do not leave matches or firelighters on top of, or close to the log burning stove.

Do not use the toaster directly under the wall units in the kitchen.

Ensure all electrical appliances and lights are switched off before going out or to bed. Especially hairdryers, straighteners etc.

If in doubt about anything, please just ask, no questions is silly or unwanted. We want you to have a lovely stay.

emergency information

good to know...



Winster Surgery
01629 650207
Leacroft Road, DE4 2DL



Matlock Dental Practice
01629 582218
92 Dale Road, Matlock



Minor Injuries Unit
01629 580211
Whitworth Hospital, DE4 2JD



Matlock Police Station
01629 580100
Bank Road, Matlock, DE4 3NF



OUR ADDRESS

Blakelow Farm
Bonsall Lane, Winster
Matlock, DE4 2PD

